

Series PS3000

Product Data

ACM Panel System

Premier Panel Systems LLC

premierpanelsystems.com

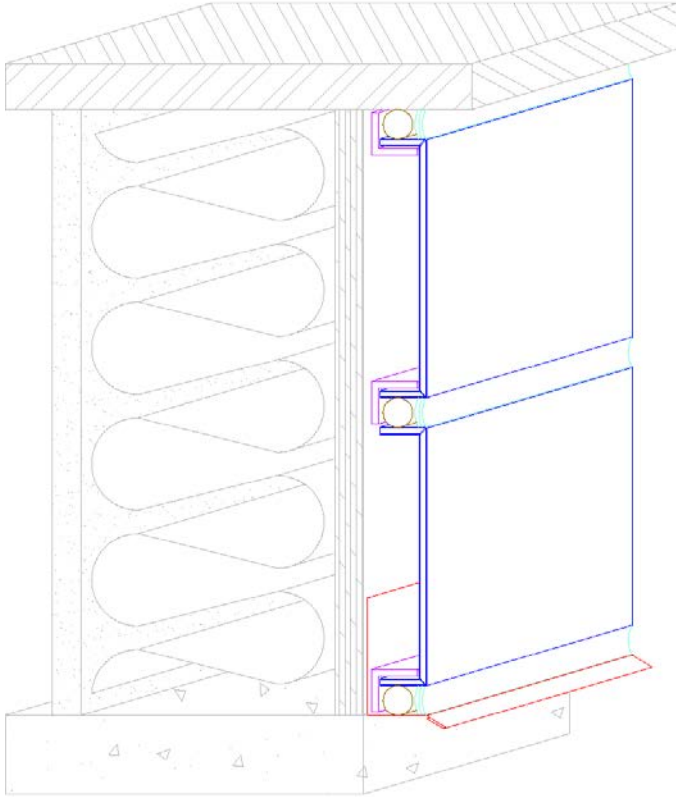
Ph: (517) 579-3202

info@premierpanelsystems.com

Series PS3000

(Wet Joint System)

PREMIER
PANEL
SYSTEMS

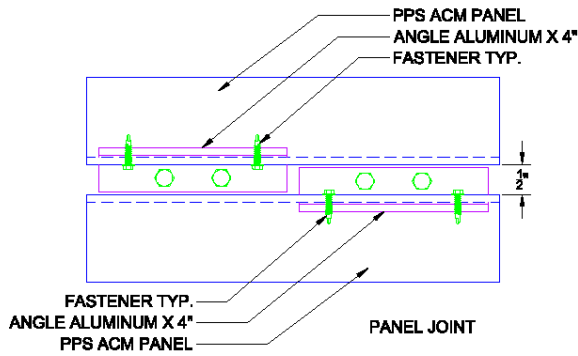
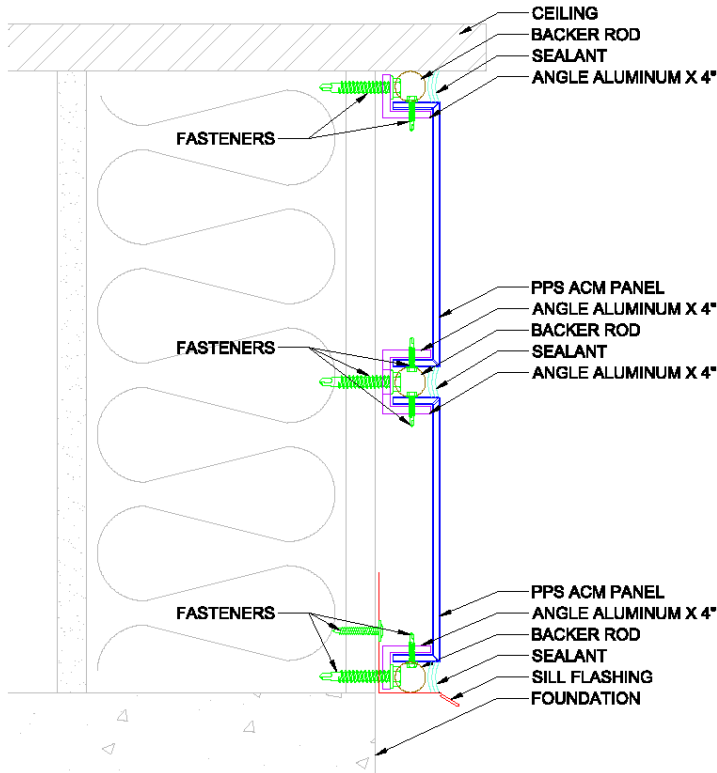


Premier Panel Systems PS3000 wet joint system is the ideal cladding for your building's exterior. Aluminum Composite Material (ACM) panels are known for their many attributes which far exceed that of traditional exterior facades. Manufacturing processes that continuously thermobond two sheets of coil coated .02mm aluminum to a light weight yet rigid 4mm polyethylene core create a superior wall panel. ACM panels provide greater durability, flexibility, and formability than other metal wall panels all in a light weight easy to install product.



Series PS3000

(Wet Joint System)



Technical Specifications

Series:	PS3000
System Type:	Wet Joint
Panel Type:	Aluminum Composite Wall Panel
Panel Thickness:	4mm
Core Material:	Polyethylene
Finish:	Kynar Coating
Max Panel Width:	60" (1524mm)
Min Panel Width:	4" (101.6mm)
Max Panel Length:	144" (3657.6mm)
Min Panel Length:	4" (101.6mm)

*Additional panel sizes available upon request

Testing Results

Characteristics	Test Method	Result
Uniform Load Deflection	ASTM E 330	Pass
Air Infiltration	ASTM E 283-04	Pass
Pressure Cycle	ASTM 1233-06	Pass
Static Water Penetration	ASTM E 331-00	Pass
Dynamic Water Penetration	AAMA 501.1-05	Pass

*Testing results available upon request